

ALOFT DUBAI CREEK

aloft
HOTELS



CONTENTS

INTRO
LOCATION
STAY
EAT
MEET
PLAY

URBAN COOL ON THE CREEK

Located within the cultural heart of Dubai, Aloft Dubai Creek offers urban cool on the creek. Delivering a bold and differentiated experience through design and technology featuring the first cinematic suites in the region.

The hotel is directly connected to the renowned City Centre Deira, a shopping haven with over 370 retail stores and entertainment with options for all ages. Ideally located for those looking for a different perspective, the hotel is located in close proximity to the cultural sites of the city, a short drive to Downtown and the major attractions and business hub of the city.

304 loft-inspired rooms and suites offer modern and design focused living with dazzling views over the Dubai Creek.



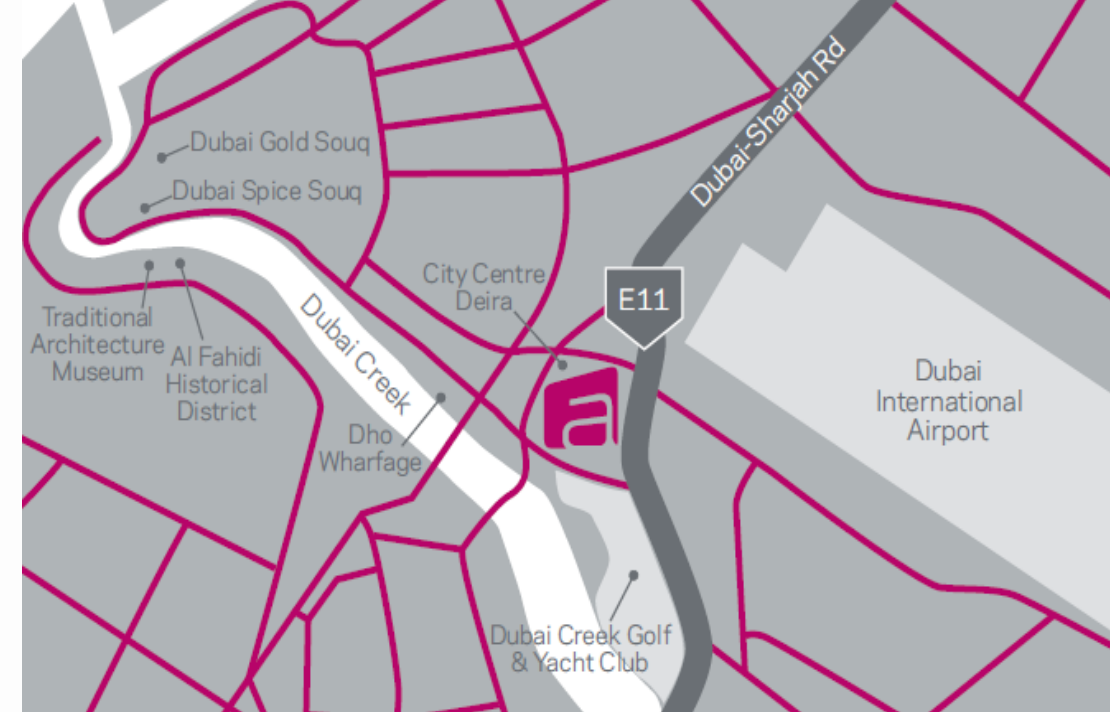
VIEW OF THE HOTEL FROM DUBAI CREEK

FIND US HERE

Guests can take advantage of an integrated shopping, lifestyle, and entertainment experience with a direct connection to City Centre Deira before exploring the historic heart of Dubai at the Creek and bustling souks with old-school charm.

Located in the cultural heart of Dubai with a direct connection to City Centre Deira, a shopping and entertainment destination.

- Views over the Dubai Creek to the city skyline
- Overlooking the Dubai Creek Golf & Yacht Club
- Located in the cultural heart of the city, close to the Spice and Gold Souk
- 5.1km from Dubai International Airport (DXB)



aloft
DUBAI CREEK



DEIRA

AL JADDAF

AL KARAMA

DOWNTOWN
DUBAI

JUMEIRAH

SHEBA

DISTANCE FROM ALOFT DUBAI CREEK

CITY CENTRE DEIRA	Direct connection	2 minutes walk through interlink
DUBAI METRO	600m	7 minutes walk through City Centre Deira
DUBAI AIRPORT	5.1km	6 minutes drive or by metro
DUBAI CREEK GOLF AND YACHT CLUB	3.3km	10 minutes drive
CREEK PARK	5.7km	8 minutes drive
GOLD AND SPICE SOUQ	5.9km	20 minutes drive
AL FAHIDI HISTORICAL DISTRICT	6.3km	16 minutes drive
AL SEEF	4.9km	8 minutes drive
BURJ KHALIFA	14.4km	13 minutes drive
LA MER	13.7km	19 minutes drive

STAY



FUN FACTS ABOUT OUR ROOMS

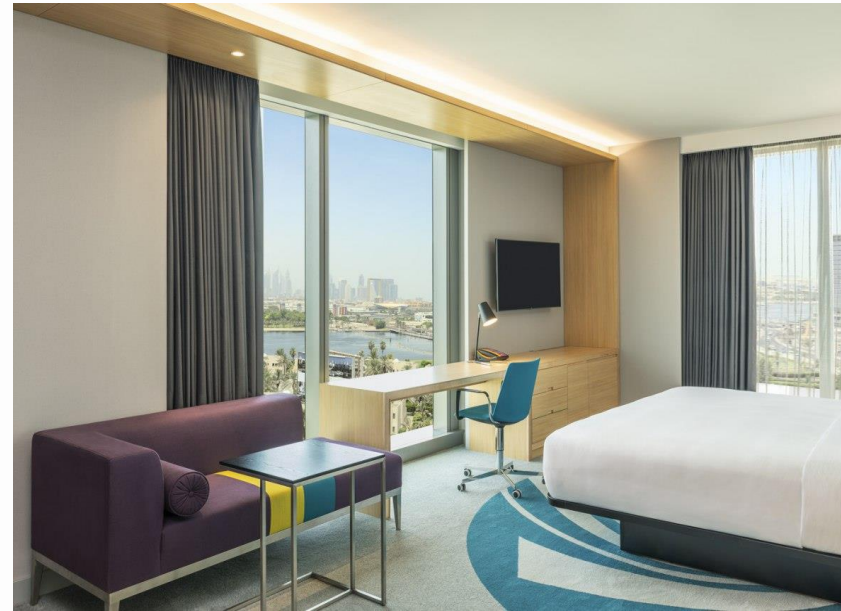
- There are 245 interconnecting rooms and suites.
- 128 rooms out of 274 Aloft and Savvy rooms have 2 twin beds.
- Aloft and Savvy rooms are 30 sqm.
- There are 20 Savvy Suites (61 sqm each) and all of them have a connecting room.
- All 4 of our Cinema Suites are 64 sqm.
- Ultra Savvy Suite is 91sqm.
- There are 5 accessible rooms.



SAVVY/ALOFT ROOMS



SAVVY SUITE



ULTRA SAVVY SUITE



ABOUT OUR CINEMA -THEMED SUITES

- All located on the 5th floor, a floor only dedicated to cinema.
- The suites are inspired by 4 themes: Bollywood, Hollywood, Agent House and Superhero.
- All feature a spacious lounge with theme-related-art works and a kitchenette.
- A vending machine filled with light snacks for a complete movie experience.
- Hollywood Suite and Superhero Suite are connected to two other rooms.
- Agent House Suite and Bollywood Suite have one connecting room each.
- A remotely controlled Home Cinema System.
- Centralized Smart Home system.



THEMED SUITES

The suites are inspired by 4 themes:

- Bollywood Suite
- Hollywood Suite
- Agent House Suite
- Superhero Suite

- Features:
- One bedroom suite
- One bathroom
- Kitchenette
- Lounging area with a movie theater.
- Creek view



EAT



THE CANTEEN

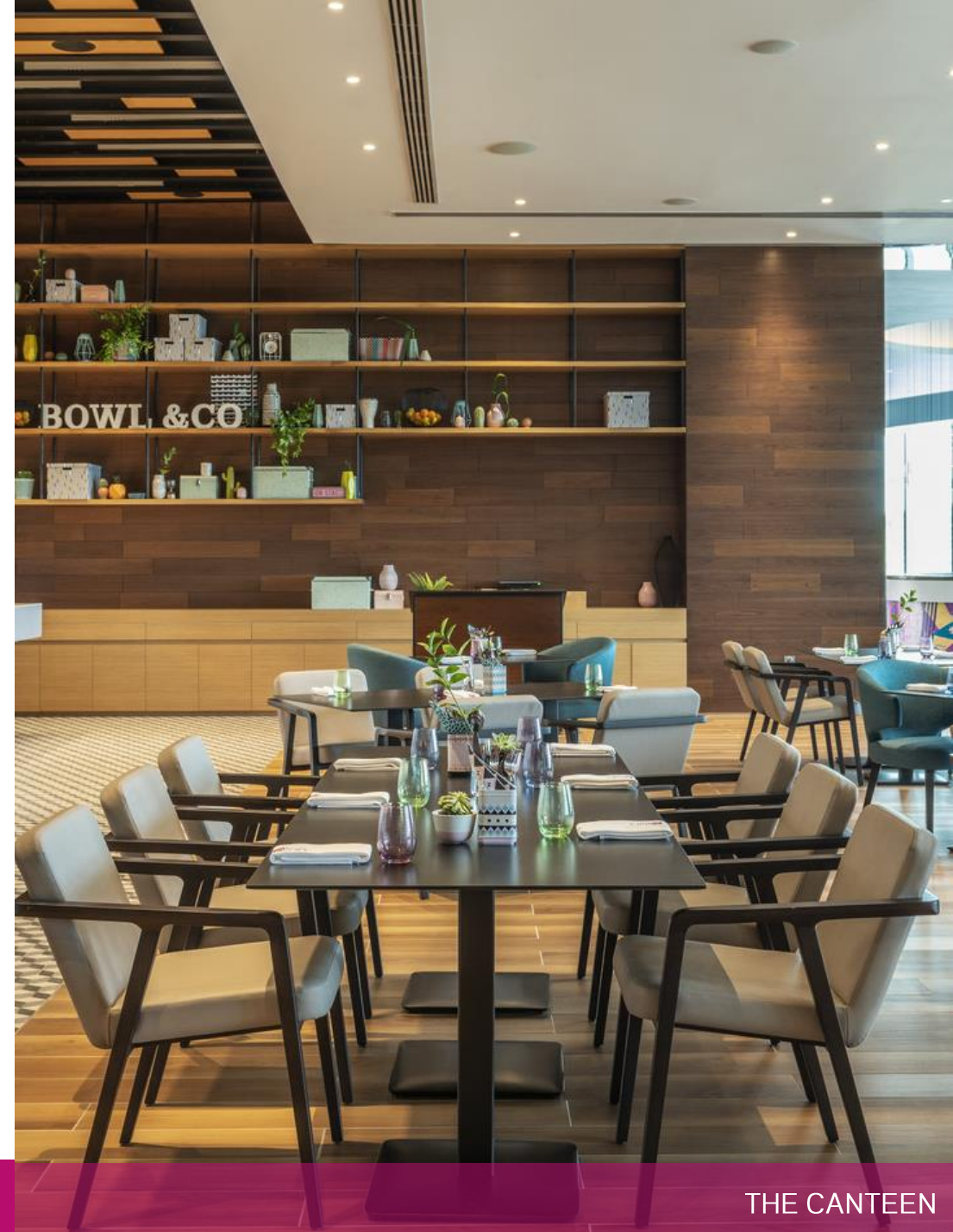
Serves approachable "bowl meals" for everyone and "bowl-sharing" for a crowd. Bowls are about balancing the different types of food that you eat, making sure that the combination is super-fresh, delicious, and versatile. The Canteen draws inspiration on foods from shareable concept inspired by different cultures which allow having flexibility with what's trending, what's in the season and to promote and inspire healthy eating.

Opening hours:

Breakfast: 6.30 AM - 11 AM

Lunch: 12.30 PM - 3.30 PM

Dinner: 6.30 PM - 11 PM



HAN SHI FU

A modern Chinese and Asian Fusion gastropub and restaurant, the latest concept from the award-winning team who introduced Din Tai Fung to Dubai.

Han Shi Fu offers a unique urban dining experience by serving excellent food with bold Asian flavors and award winning beverages from around the world. At Han Shi Fu you can find both your favorite Asian dishes as well as the trendiest street food from cities such as Taipei, Hong Kong, Shanghai, New York, and Los Angeles.

Opening Hours:

Weekday (Sunday to Wednesday) : 11 AM - 2 AM

Weekend (Thursday to Saturday): 11 AM - 3 AM



ENTRANCE TO THE HAN SHI FU RESTAURANT

RE:FUEL BY ALOFT

For grabbing a quick lunch before a meeting or before/after a long flight, stock up with the essentials anytime. The colorful and innovative Grab&Go concept offers a variety of pots made on demand., healthy snacks, local specialties, and a few indulgent treats around the clock.

Wake up with a SteamPunk craft-brewed coffee, sip on a healthy smoothie or grab a classic club sandwich anytime, any day.

Opening hours:
24 hours



MEET



TACTIC MEETING ROOMS

Get business done with our five Tactic meeting rooms, holding a total of 73 pax. Our meeting rooms accommodate over 479 sqm of space offering:

- State-of-the-art technology
- Outdoor space available
- Fast, free Wi-Fi
- Pre function area
- Natural light
- Creative catering options
- Dedicated operational team to provide further assistance.



PRE-FUNCTIONAL AREA



CLASSROOM MEETING SETUP

PLAY





SPLASH POOL OVERSEEING THE DUBAI SKYLINE

THANK YOU

